

# Combi-Ratchet™

Keyless convenience with master key override!



The Combi-Ratchet is a secure ratchet lock with 1,000 possible combinations. The innovative ratchet lock provides the convenience of keyless convenience with the option of master key access.

Hinged Door Model



Sliding Door Model

**Easy to Use!**

**Secure -  
1,000 possible  
combinations**

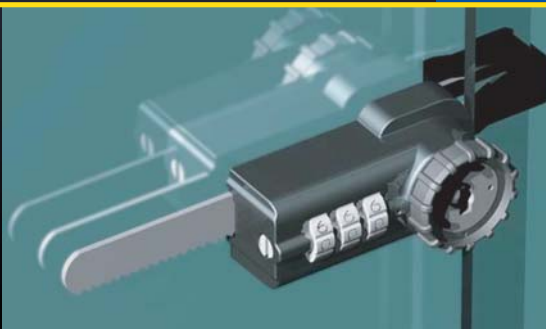
**Easily set  
your own  
combination  
any time!**

**Two access  
modes -  
combination  
or master key**

To change the combination, simply have it on the opening combination and turn the change screw and change to the new combination. It's that easy!

## APPLICATIONS

- Sliding Glass Doors
- Display Cases
- Hinged Glass Doors
- Sliding Panel Doors

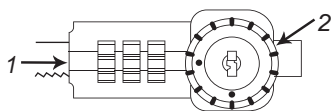


# Combi-Ratchet™ Keyless Convenience with Master Key Override

## Setting Your Personal Combination

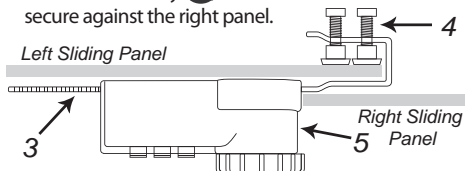
- Set the combination prior to installing the lock
- Combination must be on current opening number prior to resetting. (The combination is factory set at >>0-0-<<)
- Locate the change screw. **1** Push inward with a small screwdriver & rotate the change screw 90 degrees clockwise. The change screw will now be recessed inside the lock body.
- Set personal combination by turning dials to desired combination. Rotate the screw back counterclockwise until the screw is now flush with the surface. The combination is now set.
- Test the combination by setting the combination to the new code. The ratchet bar release **2** should rotate from red to green & slide the lock off the ratchet bar.

NOTE: To reset the combination in the future, the combination must be set to current opening code prior to turning the change screw.



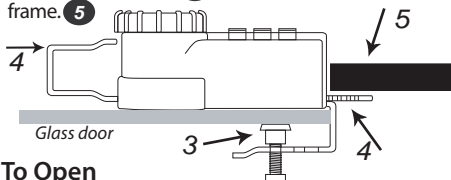
## Installation Instructions - Model 7860

- Typically, sliding panels have the right panel on the front track. If the left panel is on the front track either reverse the panels, if possible (otherwise the numbers on the ratchet lock are installed upside down).
- Attach the ratchet bar **3** to rear panel as shown below (right panel open).
- Tighten the two thumb screws. **4**
- Close the right sliding panel.
- Slide the lock body **5** on the ratchet bar until secure against the right panel.



## Installation Instructions - Model 7861

- Attach and tighten the two thumb screws **3** to rear of glass door as shown below.
- Slide the ratchet bar **4** so that it slides behind door frame. **5**

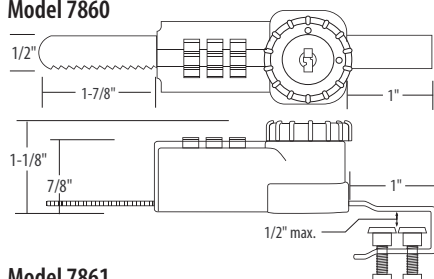


## To Open

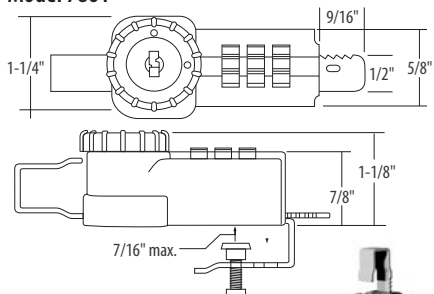
- Either set the combination to the opening number or insert the master key and turn.
- Turn the ratchet bar release from red to green to release the bar.

## Specifications

### Model 7860

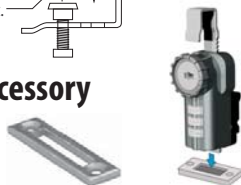


### Model 7861



## Optional Accessory

Slotted Strike for Model 7861



## More Innovative Security Products From The Frank J. Martin Company

**Combi-Cam** [www.combi-cam.com](http://www.combi-cam.com)

Replaces any keyed cam lock. No need to hassle with keys!

**Combi-Bolt** [www.combi-bolt.com](http://www.combi-bolt.com)

Traditional sliding bolt with an innovative twist!

**ShurLok Key Storage Lock Box**

[www.shurlok-products.com](http://www.shurlok-products.com)

Never be locked out again!

**ShurLok Combination Key Storage Cabinet**

[www.combination-key-cabinet.com](http://www.combination-key-cabinet.com)

Why use keys to access keys?

**HitchSafe** [www.hitchsafe.com](http://www.hitchsafe.com)

Store spare keys, credit cards, etc. inside your 2" hitch! Convert your receiver into a VAULT!

**Sobo High Security Padlocks**

[www.sobolocks.com](http://www.sobolocks.com)

High security at an affordable price!

FJM Security

18424 Hwy 99

Lynnwood WA 98037

(800) 654-1786

[www.fjmsecurity.com](http://www.fjmsecurity.com)

[info@fjmsecurity.com](mailto:info@fjmsecurity.com)